

FED. ROAD DIST. NO.	STATE	PROJ. NO.	SHEET NO.	TOTAL SHEETS
3	COLO.	SP 20-10-513	1	

20,10513

INDEX OF SHEETS

- SHEET NO. 1 SKETCH MAP, TITLE PAGE AND SUMMARY OF APPROXIMATE QUANTITIES.
- 2 DETAILS OF SIDEWALK FOR BRIDGE STA. 672+
- 3 DETAILS OF SIDEWALK FOR BRIDGE STA. 678+
- 4 STANDARD ROADWAY CONSTRUCTION TRAFFIC SIGNS M-2-D

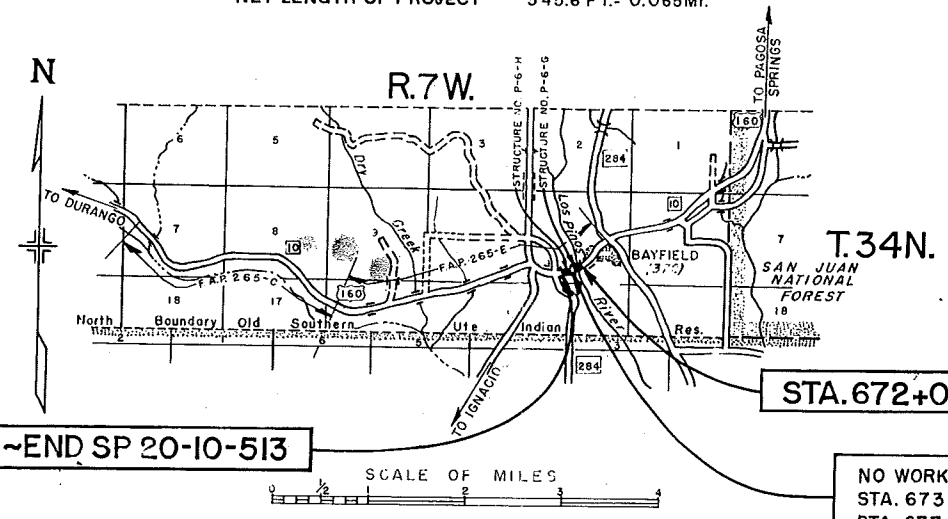
COLORADO STATE HIGHWAY DEPARTMENT

DETAILS OF PROPOSED STATE PROJECT NO. SP 20-10-513 STATE HIGHWAY NO. 10 LA PLATA COUNTY

CONVENTIONAL SIGNS

- CENTER LINE TITLE SHEET
- RIGHT-OF-WAY LINE
- COUNTY LINE
- TOWNSHIP OR RANGE LINE T.8 S. R.89 W.
- SECTION LINE T.7 S. R.89 W.
- QUARTER SECTION LINE
- SIXTEENTH SECTION LINE
- PROPERTY OR TRACT LINE
- CITY LIMITS
- RAILROAD
- BARBED WIRE FENCE
- WOVEN WIRE-COMBINATION FENCE
- SNOW FENCE
- TELEPHONE & TELEGRAPH LINE
- POWER LINE
- DETOUR ROUTE
- PRESENT ROAD (PLAN SHEETS)

GROSS LENGTH OF PROJECT 663.8 FT. = 0.125 MI.
NET LENGTH OF PROJECT 345.6 FT. = 0.065 MI.



INACTIVE

NOTICE TO BIDDERS

It is recommended that bidders on this Project go over the plan details with one of the following field representatives of this department.
C. E. Shumate District Engineer
P.O. Box 536; Pueblo, Colorado
J. E. Casey Construction Engineer
P.O. Box 1551; Durango, Colorado

STA. 678+72.8 ~ END SP 20-10-513

STA. 672+09.0 ~ BEG. SP 20-10-513

NO WORK SECTION
STA. 673+91.8 TO
STA. 677+10.0

SUMMARY OF APPROXIMATE QUANTITIES

ITEM NO.	ITEM	UNIT	SIDEWALK FOR BRIDGES		PROJECT TOTALS	
			STA. 672+	STA. 678+		
48	STRUCTURAL STEEL	LB.	11,130	9,680	20,810	
48x	SUBWAY GRATING	SQ. FT.	649	587	1,236	
78a	CHAIN LINK WIRE MESH FENCE	LIN. FT.	186	164	350	
91x	PIPE RAILING (2" O.D.)	LIN. FT.	196	179	375	

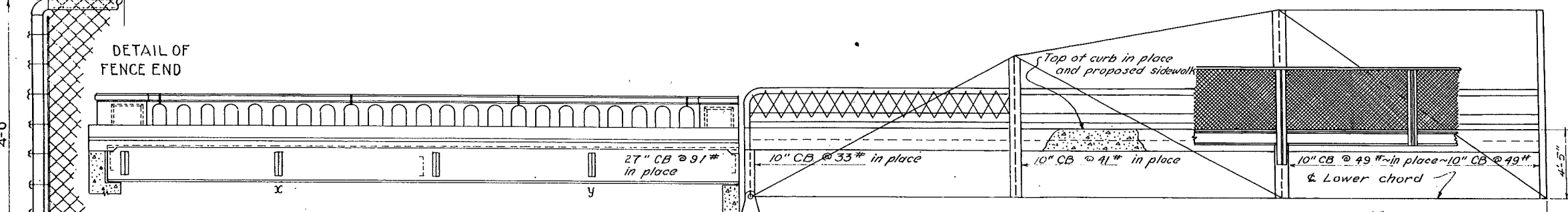
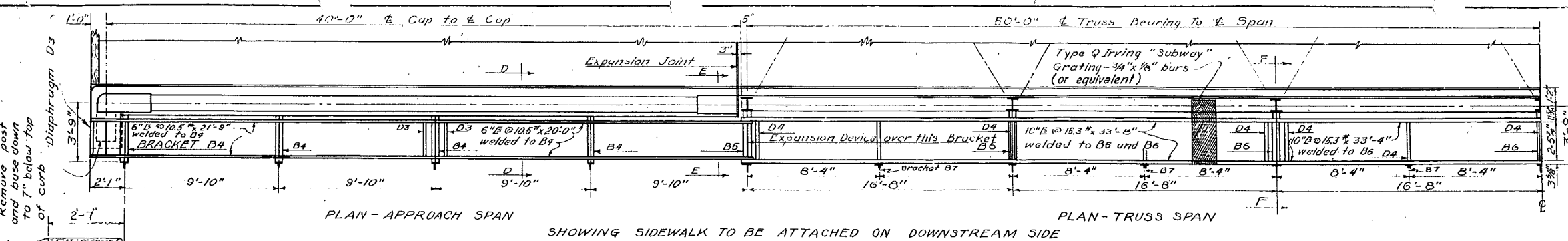
RECOMMENDED FOR APPROVAL

John Bell
ASSISTANT ENGINEER DATE 2-7-49

APPROVED

Wm. C. Watson
STATE HIGHWAY ENGINEER DATE 2-8-49

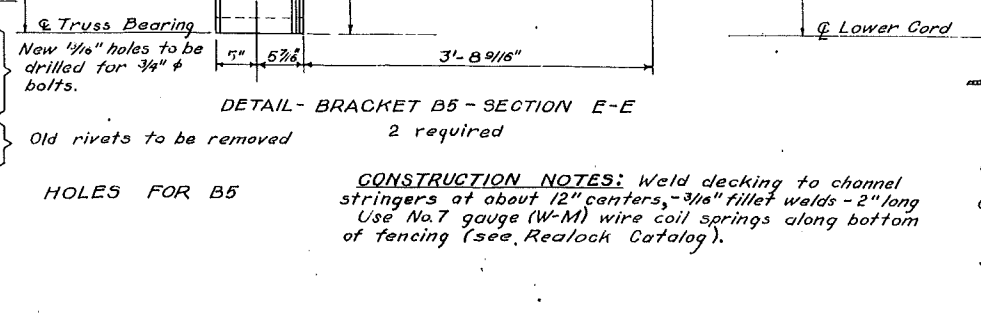
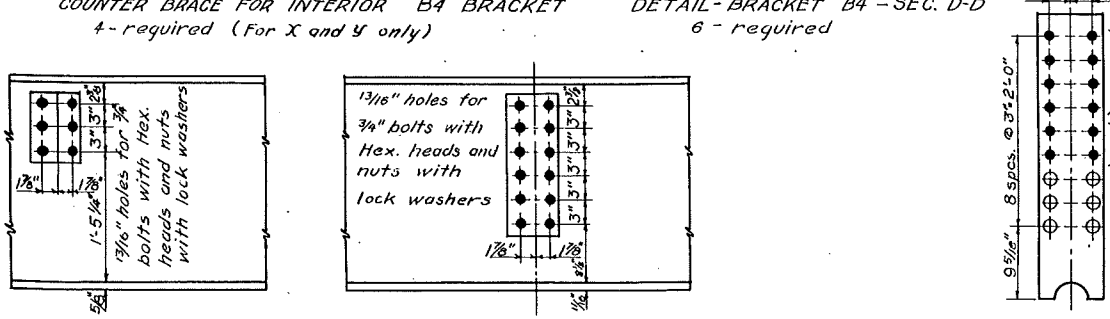
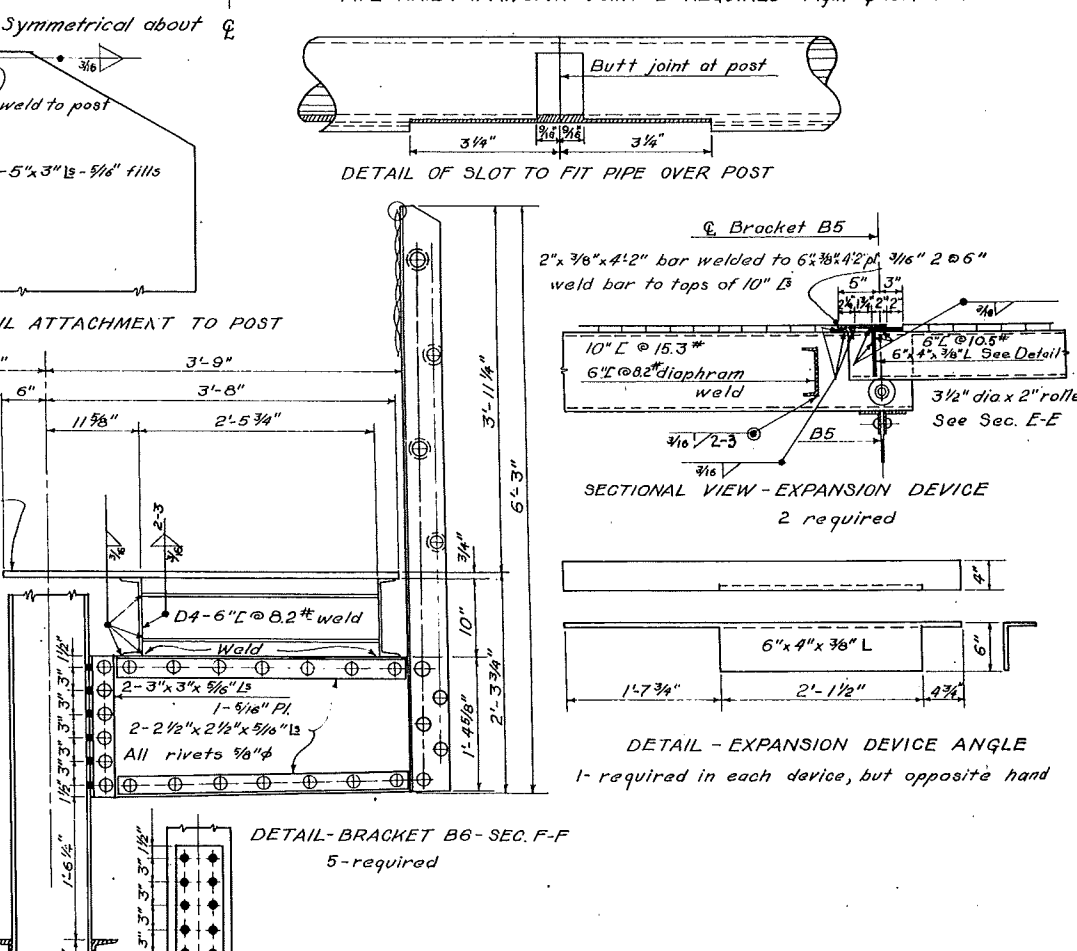
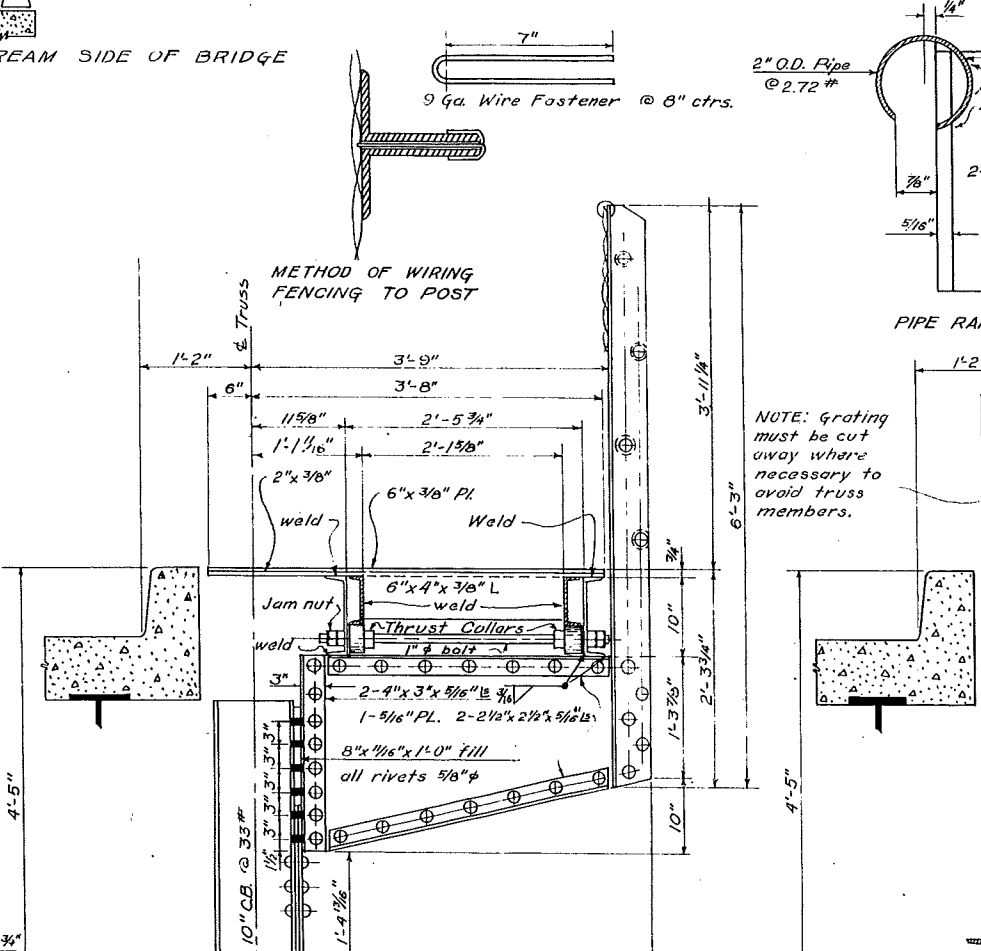
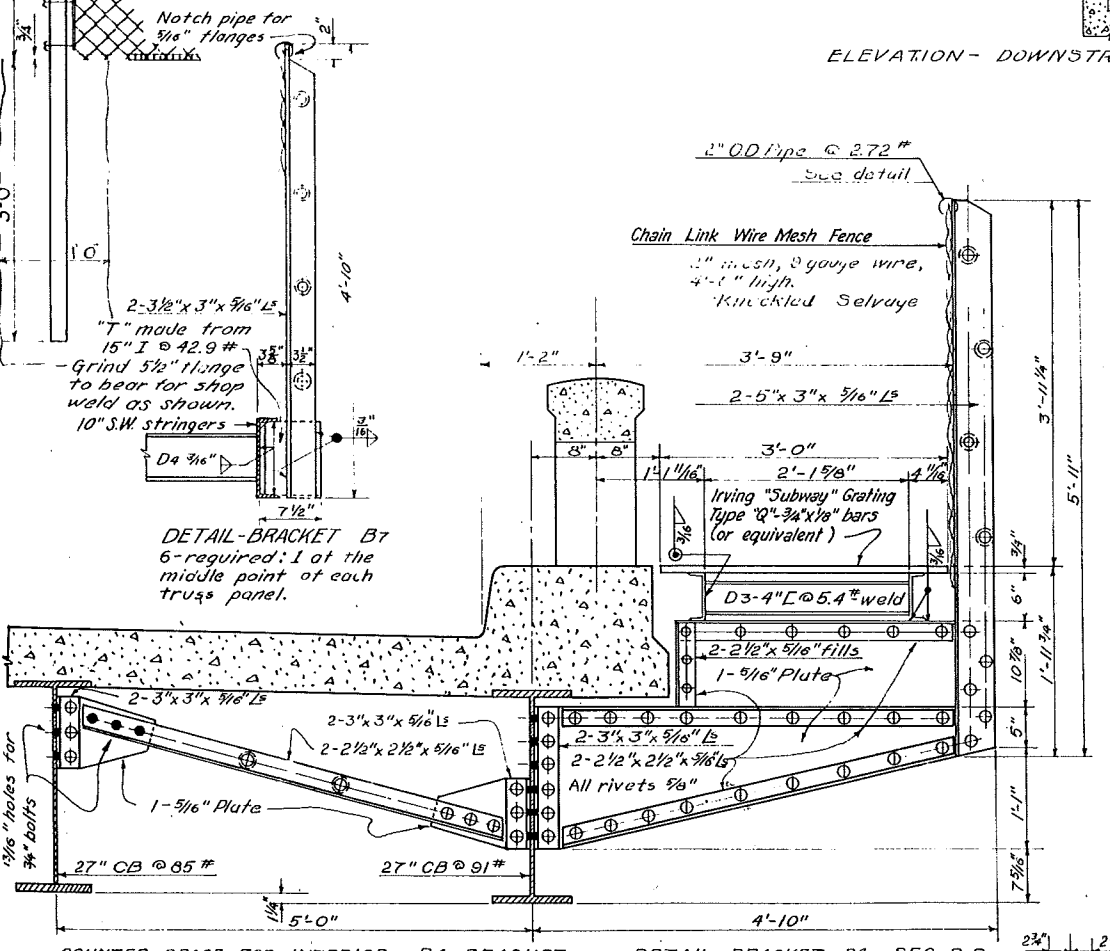
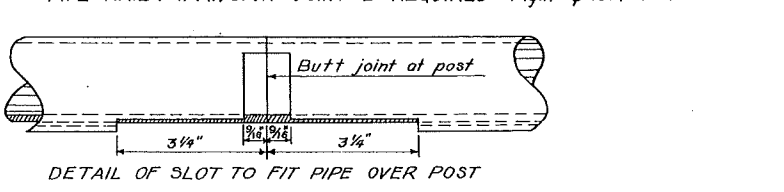
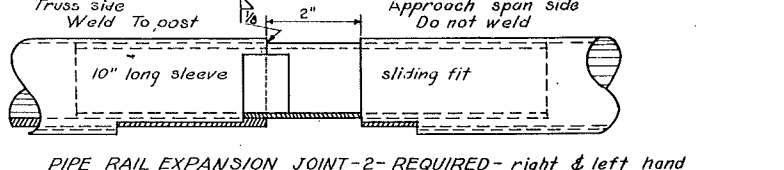
FED. ROAD DIST. NO.	STATE	PROJ. NO.	SHEET NO.	TOTAL SHEETS
3	COLO.	SP 20-10-513	2	



H.W.R. - E.J.S.

ITEM NO.	DESCRIPTION	UNIT	AMOUNT
48	# Structural Steel (Including bolts and rivets)	Lb	11,130
48 x	▽ Subway Grating	Sq. Ft.	649
78 a	● Chain Link Wire Mesh Fence	Lin. Ft.	186
91 x	▲ Pipe Railing (2\" O.D. @ 2.72#/ft.)	Lin. Ft.	196

Includes bolts and collars for expansion device.
 Irving-Type \"Q\" - 3/4\" x 1/2\" bars (or equivalent)
 2\" mesh - 9 gauge wire x 4'-0\"
 ▲ Pipe railing to be given one shop coat of Zinc Chromate and two field coats of aluminum paint



GENERAL NOTES

All work shall be done according to the standard specifications of the Colorado State Highway Department, adopted Jan. 1, 1948. All structural steel shall be given one shop coat of zinc chromate and two field coats of aluminum paint, including grating. All rivets shall be power driven. All rivets shall be 5/8\". Plans and shop details of bridges in place on file with Colorado State Highway Department. Field connections are bolted except as shown for welds.

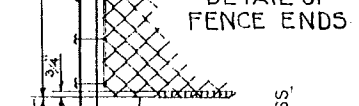
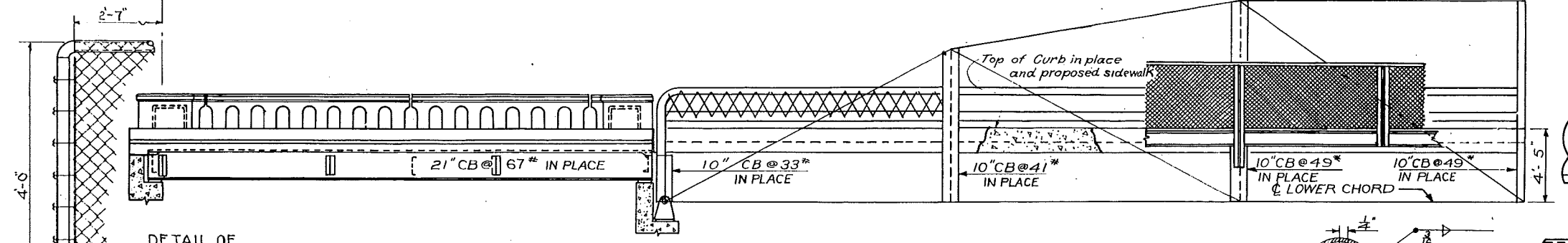
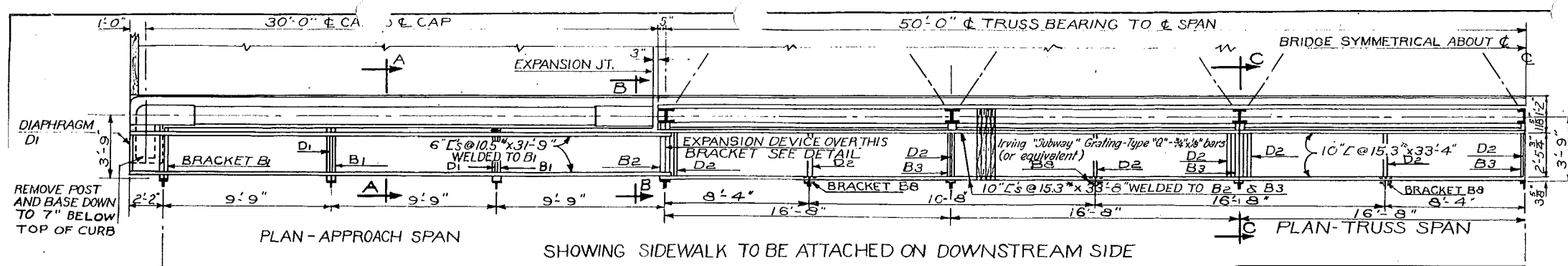
COLORADO
STATE HIGHWAY DEPARTMENT
 182'-10\" x 3'-0\" SIDEWALK
 ATTACHED TO OLD STRUCTURE
 ON DOWNSTREAM SIDE
 Across Across Los Pinos River (Chunnel)
 Sta. 672 + 08.0 to 673 + 91.833
 Near Boyfield Sec. II T. 34 N. 7 W. N.M.P.M.

Designed by H.W.R. Approved by
 Made by H.W.R. Bridge Engineer
 Checked by Date: Nov. 4 1948

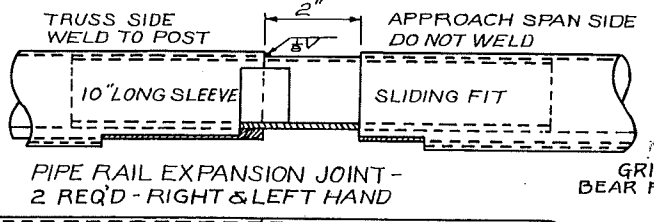
FED. ROAD DIST. NO.	STATE	PROJ. NO.	SHEET NO.	TOTAL SHEETS
3	COLO.	SP 20-10-513	3	

SUMMARY OF QUANTITIES				
ITEM NO.	DESCRIPTION	UNIT	AMOUNT	
4-8	# Structural Steel (including bolts and rivets)	LB	9680	
48x	▽ Subway Grating	SQ. FT.	587	
78a	● Chain Link Wire Mesh Fence	LIN. FT.	164	
91x	▲ Pipe Railing (2" O.D. @ 2.72#/ft.)	LIN. FT.	179	

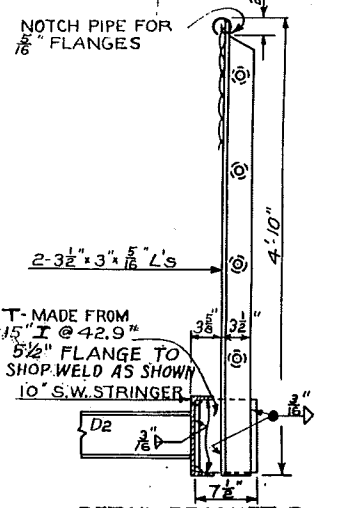
- # Includes bolts and collars for expansion device
- ▽ Irving-Type "Q"-3/4"x1/2" bars (or equivalent)
- 2" mesh-9 gauge wire x 4'-0"
- ▲ Pipe railing to be given one shop coat of Zinc Chromate and two field coats of aluminum paint



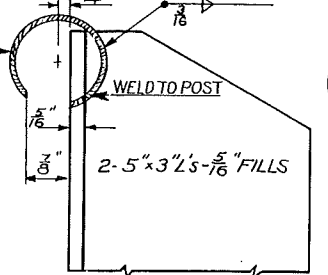
ELEVATION-DOWNSTREAM SIDE OF BRIDGE



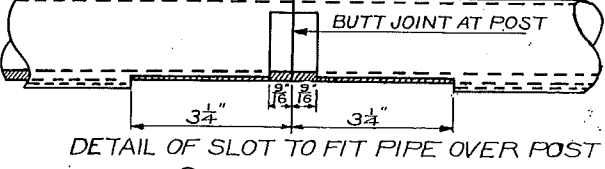
PIPE RAIL EXPANSION JOINT - 2 REQ'D - RIGHT & LEFT HAND



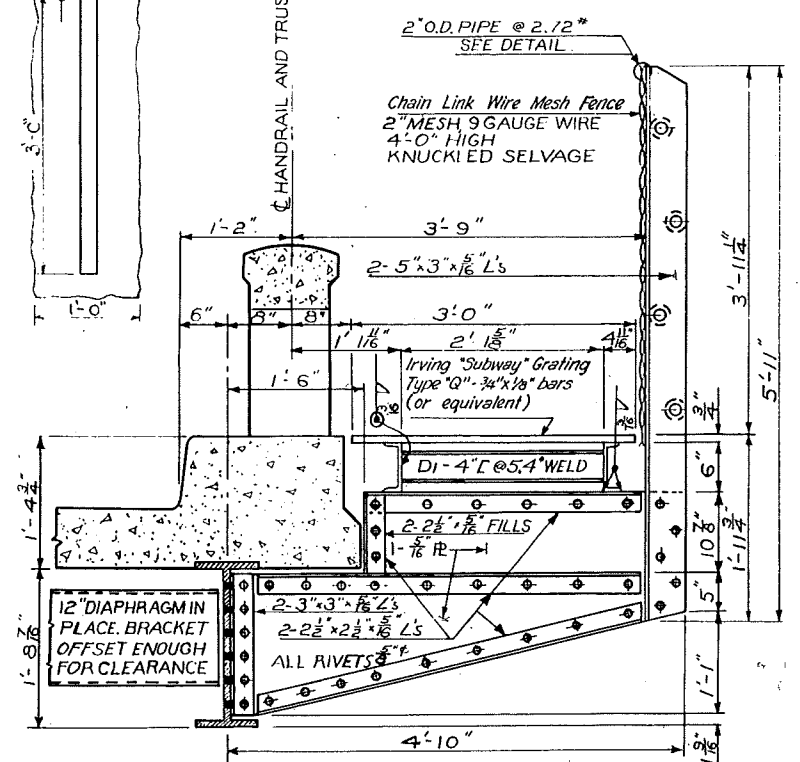
DETAIL-BRACKET B8 6-REQ'D AT THE MIDDLE OF EACH TRUSS PANEL.



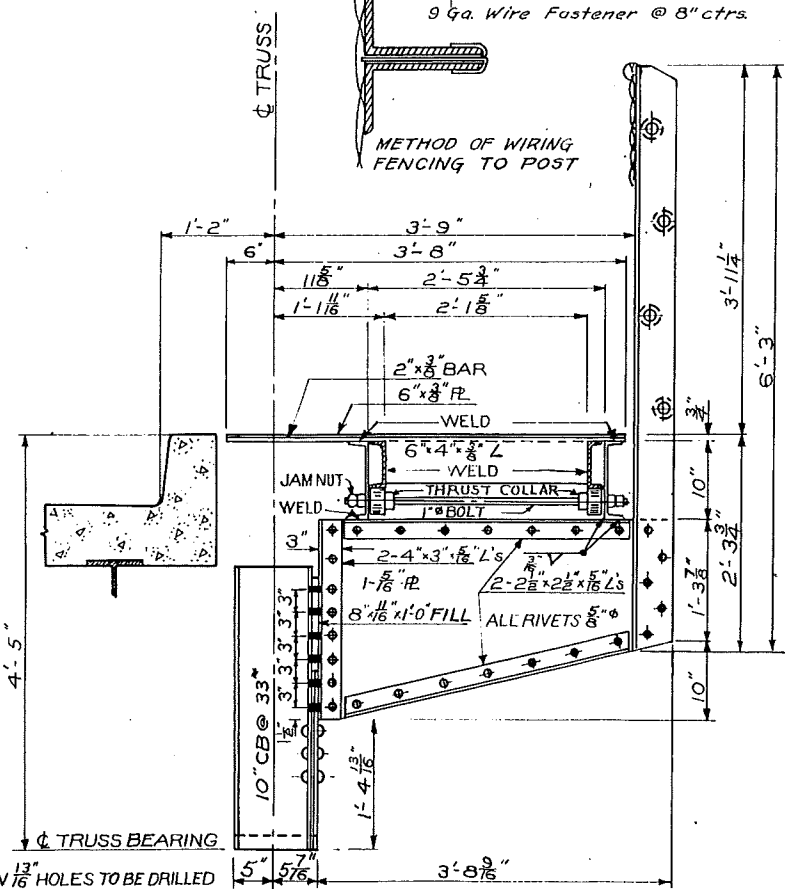
PIPE RAIL ATTACHMENT TO POSTS



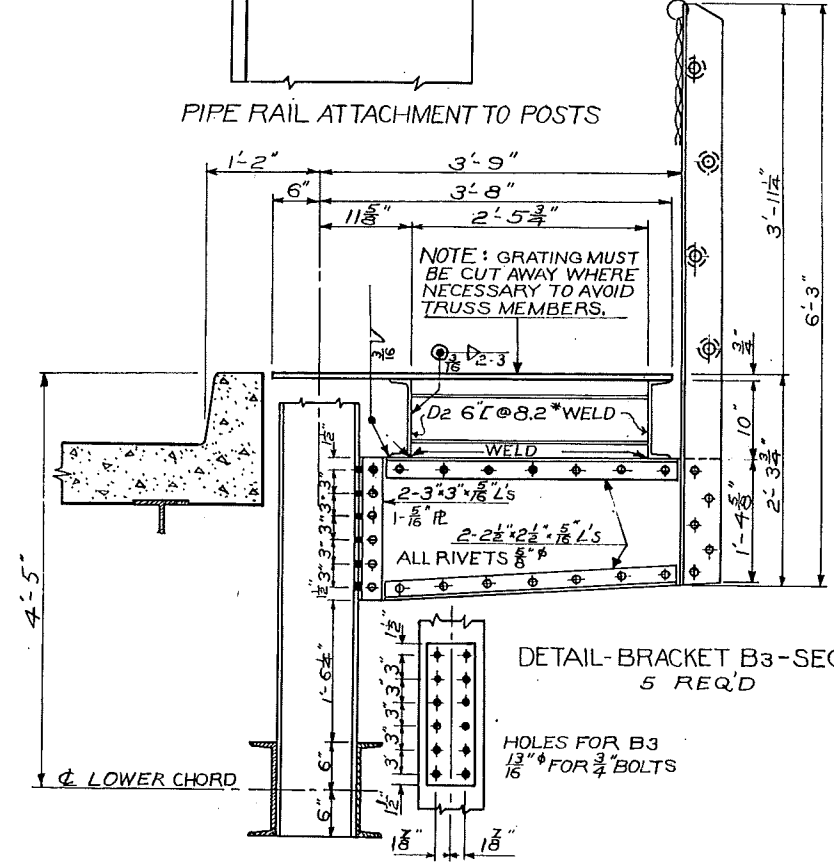
DETAIL OF SLOT TO FIT PIPE OVER POST



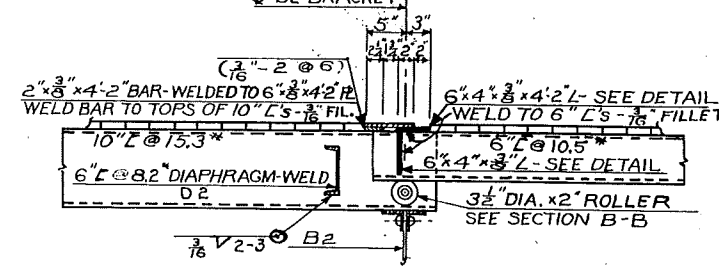
DETAIL-BRACKET B1- SECTION A-A - 6 REQ'D



DETAIL BRACKET B2 - SECTION B-B 2 REQ'D

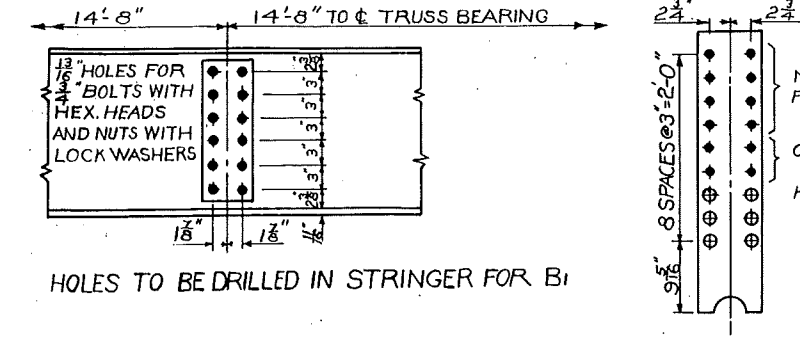


DETAIL-BRACKET B3-SECTION C-C 5 REQ'D

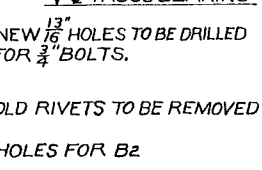


SECTIONAL VIEW- EXPANSION DEVICE 2-REQ'D

DETAIL-EXPANSION DEVICE-ANGLE 1-REQ'D IN EACH DEVICE BUT OF OPPOSITE HAND



HOLES TO BE DRILLED IN STRINGER FOR B1



NEW 13/16" HOLES TO BE DRILLED FOR 3/4" BOLTS. OLD RIVETS TO BE REMOVED HOLES FOR B2

CONSTRUCTION NOTES: WELD DECKING TO CHANNEL STRINGERS AT ABOUT 12" CENTERS, - 1/8" FILLET WELDS- 2" LONG USE NO. 7 GAUGE (W-M) WIRE COIL SPRINGS ALONG BOTTOM OF FENCING (SEE REALOCK CATALOG).

GENERAL NOTES

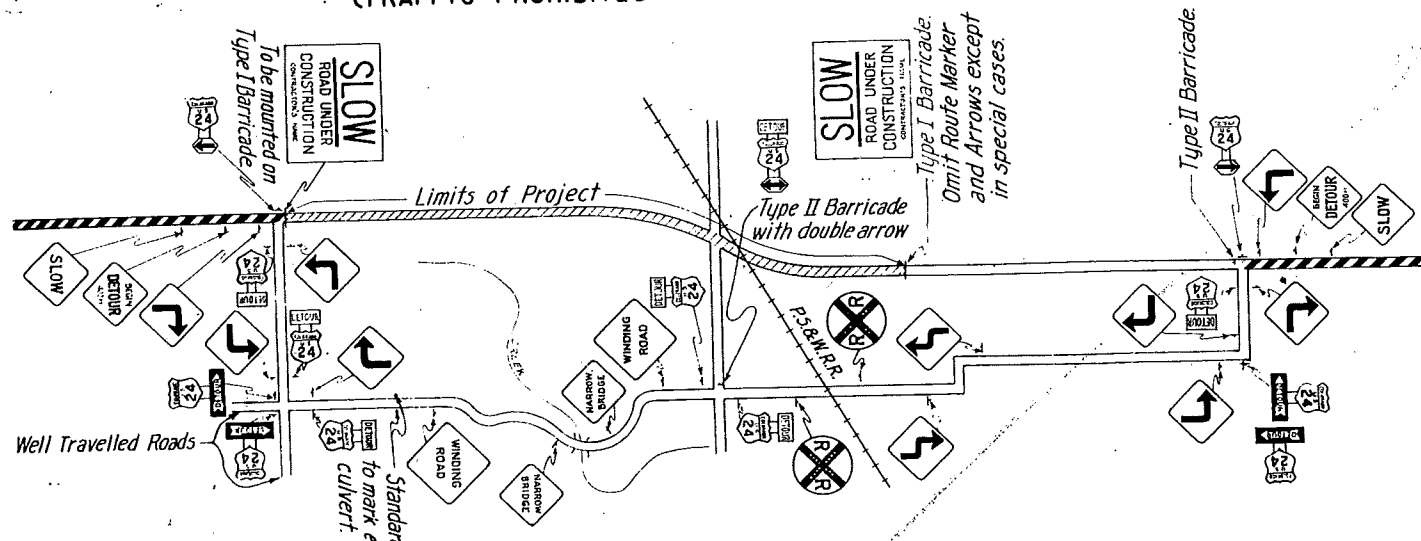
ALL WORK SHALL BE DONE ACCORDING TO THE STANDARD SPECIFICATIONS OF THE COLO. STATE HIGHWAY DEPARTMENT ADOPTED JAN. 1, 1948.
 ALL STRUCTURAL STEEL SHALL BE GIVEN ONE SHOP COAT OF ZINC CHROMATE AND TWO FIELD COATS OF ALUMINUM PAINT, INCLUDING GRATING.
 ALL RIVETS SHALL BE POWER DRIVEN. ALL RIVETS SHALL BE 5/8".
 PLAN AND SHOP DETAILS OF BRIDGE IN PLACE ON FILE WITH COLO. STATE HIGHWAY DEPT.
 FIELD CONNECTIONS ARE BOLTED EXCEPT AS SHOWN FOR WELDS.

COLORADO STATE HIGHWAY DEPARTMENT
 162'-10" x 3'-0" SIDEWALK ATTACHED TO OLD STRUCTURE ON DOWNSTREAM SIDE
 Across LOS PINOS RIVER (BRANCH) Sta. 677+10 to 678+72.63
 Near BAYFIELD Sec. 11 T. 34 N. R. 7 W.
 Designed by HWP Approved by _____
 Made by HWP Bridge Engineer
 Checked by _____ Date: _____ 194

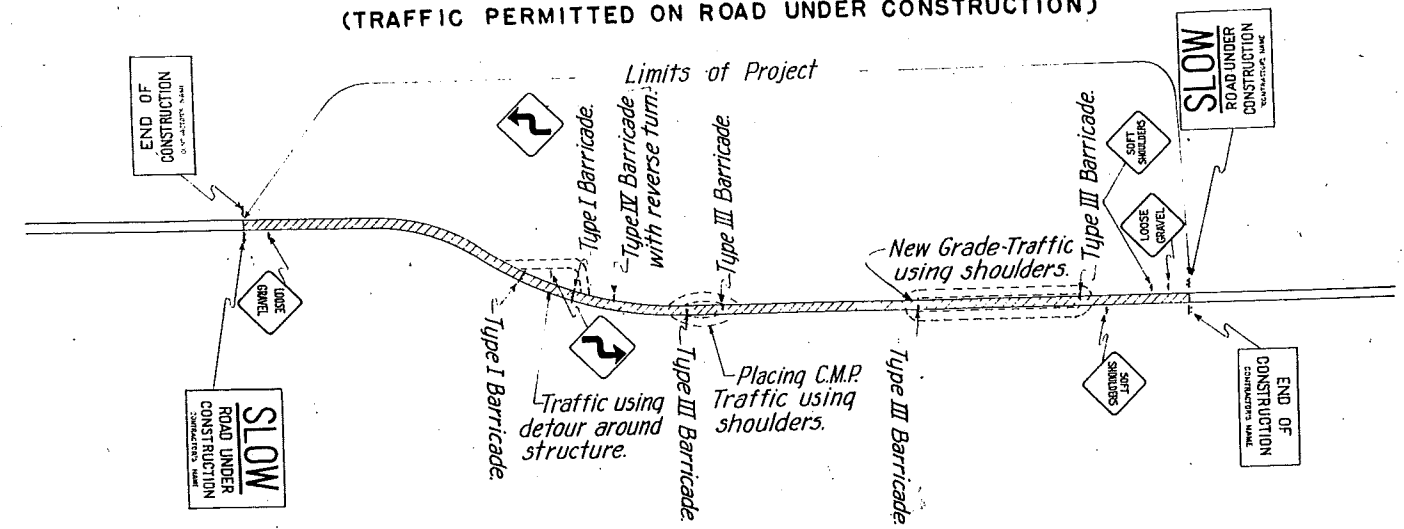
STANDARD M-2-D

FED. ROAD DIST. NO.	STATE	SHEET NO.	TOTAL SHEETS
3	COLO.	SP 20-10-31 4	4
Rev. 9-10-46 Slow Signs RBR Rev. 12-13-47 J.P.K.			

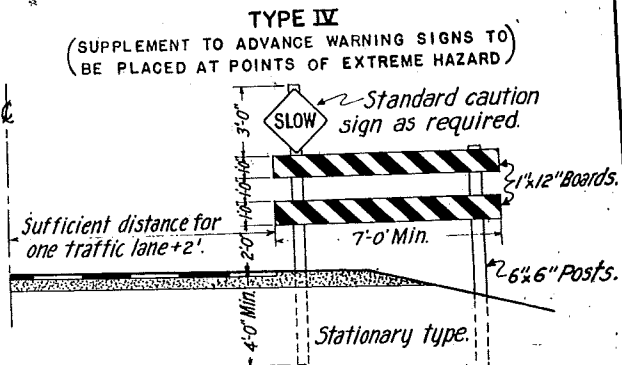
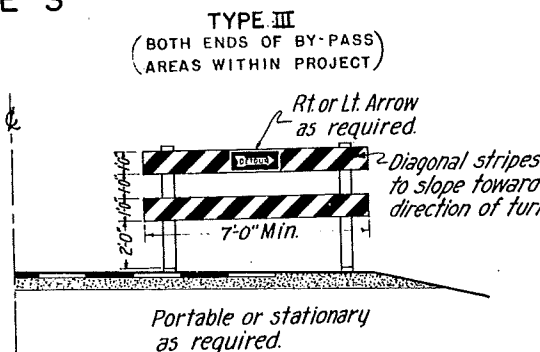
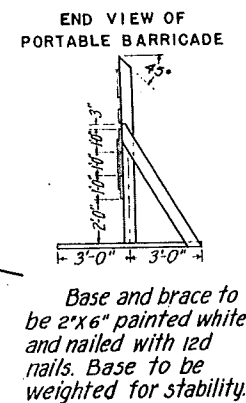
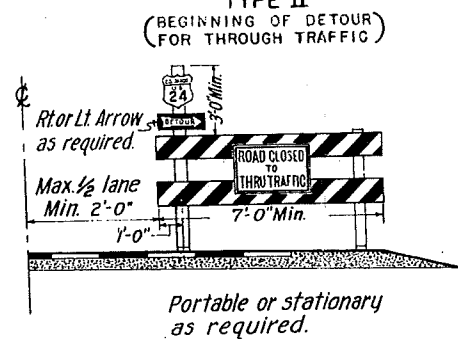
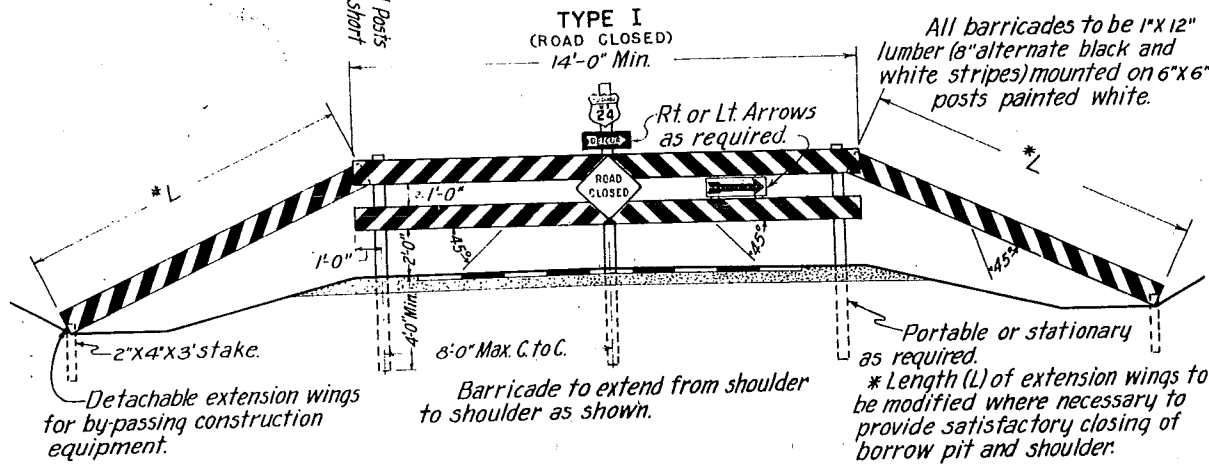
TYPICAL METHOD OF MARKING DETOUR (TRAFFIC PROHIBITED ON ROAD UNDER CONSTRUCTION)



TYPICAL METHOD OF MARKING HIGHWAY (TRAFFIC PERMITTED ON ROAD UNDER CONSTRUCTION)

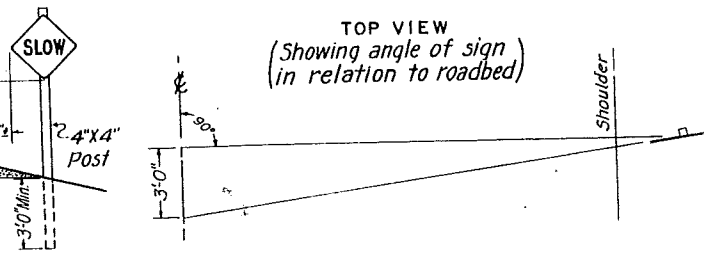


DETAILS OF BARRICADES

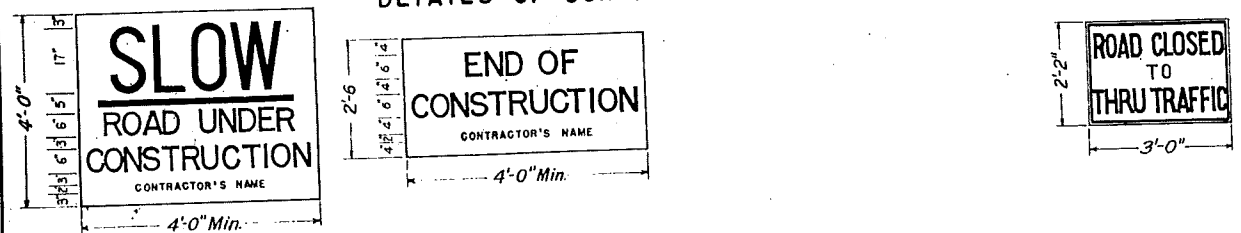


POSITION OF SIGNS RELATIVE TO ROADBED & HAZARDS

Location to be governed by field conditions. Exact location to be staked by the Engineer. In all cases caution signs are to be placed well in advance of hazard, the distance depending on topography, and existing approach speeds.



DETAILS OF CONSTRUCTION SIGNS



Signs to be of 1" material with at least three cleats in back. Background to be white, SLOW and underline to be red, and all other lettering to be black. Sign to be set on 2-4x4" posts 4 feet in the ground, except when mounted on face of Type I barricades (opposite side from reflectorized arrow) at limits of project. Not required on Type I barricades inside limits of project.

Above sign to be furnished and installed by the Department where required.

GENERAL NOTES

ALL WORK SHALL BE DONE IN ACCORDANCE WITH THE STANDARD SPECIFICATIONS OF THE COLORADO STATE HIGHWAY DEPARTMENT APPLICABLE TO THE PROJECT. WHERE TRAFFIC IS MAINTAINED THROUGH OR OVER ANY PART OF THE PROJECT THE CONTRACTOR WILL BE REQUIRED TO MARK ALL HAZARDS WITHIN THE LIMITS OF THE PROJECT WITH WELL PAINTED, WELL MAINTAINED BARRICADES AND STANDARD CAUTION SIGNS, WARNING SIGNS, AND DIRECTIONAL TYPE SIGNS. BARRICADES AND SIGNS SHALL BE MOVED, ADDED TO, CHANGED OR REMOVED AS REQUIRED DURING THE PROGRESS OF CONSTRUCTION TO MEET CHANGING CONDITIONS.

THE CONTRACTOR SHALL FURNISH AND INSTALL THE FOLLOWING AS REQUIRED WITHIN THE LIMITS OF THE PROJECT:

- ALL BARRICADES.
- APPROVED REFLECTORIZED DIRECTIONAL ARROW FOR EACH TYPE I BARRICADE.
- SLOW - ROAD UNDER CONSTRUCTION (CONTRACTOR'S NAME) SIGNS - MINIMUM 2.
- END OF CONSTRUCTION (CONTRACTOR'S NAME) SIGNS - MINIMUM 2.
- STANDARD CAUTION, WARNING AND DIRECTIONAL TYPE SIGNS AS REQUIRED.
- FLARES OR TORCHES AS FOLLOWS:
 - A. TYPE I BARRICADES - MINIMUM 3 EACH.
 - B. TYPE III OR IV BARRICADES - MINIMUM 1 EACH.
 - C. STANDARD CAUTION OR WARNING SIGNS - MINIMUM 1 EACH.

NOTE: FLARES OR TORCHES SHALL BE OF AN OIL BURNING TYPE APPROVED BY THE STATE OF COLORADO AND SHALL BE PLACED FROM 3 TO 5 FEET AHEAD OF THE SIGN OR OBJECT TO BE ILLUMINATED. IN ALL CASES FLARES OR TORCHES SHALL BE PLACED A SUFFICIENT DISTANCE AWAY, WITHIN THE ABOVE RANGE, TO AVOID DAMAGE TO FACE OF SIGN FROM SMOKE OR FLAME AND SHALL BE KEPT BURNING FROM SUNSET TO SUNRISE.

ALL LUMBER USED IN BARRICADES AND SIGNS SHALL BE SOUND, DURABLE MATERIAL AND SHALL BE KEPT WELL PAINTED WITH NEAT, UNIFORM LETTERS AND SYMBOLS CONFORMING TO STYLE SHOWN FOR THE VARIOUS SIGNS. UNEVEN OR SMEARED LETTERING WILL NOT BE PERMITTED.

WHERE TRAFFIC IS PROHIBITED FROM THE PROJECT, THE DETOUR WILL BE MARKED BY THE DEPARTMENT, EXCEPT THAT TYPE I BARRICADES, COMPLETE WITH NECESSARY ARROWS AND SIGNS, SHALL BE PROVIDED, ERECTED, PAINTED AND MAINTAINED BY THE CONTRACTOR AT BOTH ENDS OF THE PROJECT AND AT ALL INTERSECTING ROADS REQUIRED TO BE LEFT OPEN FOR CROSS TRAFFIC.

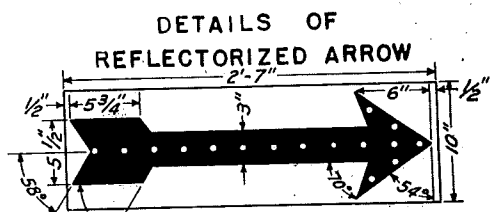
US AND/OR STATE ROUTE MARKERS DEEMED NECESSARY FOR GUIDANCE OF TRAFFIC OVER THE PROJECT OR FOR USE ON TYPE I BARRICADES WILL BE FURNISHED BY THE DEPARTMENT TO BE INSTALLED BY THE CONTRACTOR.

THE CONTRACTOR WILL BE RESPONSIBLE FOR ALL SIGNS FURNISHED HIM BY THE DEPARTMENT AND SHALL RETURN SAME UPON COMPLETION OF THE PROJECT. THE CONTRACTOR WILL BE REQUIRED TO REIMBURSE THE DEPARTMENT FOR ANY SIGNS FURNISHED HIM WHICH HAVE BECOME DAMAGED OR LOST DURING HIS OPERATIONS.

THE TYPICAL METHOD OF MARKING AS SHOWN ILLUSTRATES THE MINIMUM ACCEPTABLE SIGNING PROCEDURE. MODIFICATIONS AND ADDITIONAL REQUIREMENTS WILL BE DETERMINED BY LOCATION, TRAFFIC VOLUME AND OTHER PERTINENT CONDITIONS AFFECTING THE PUBLIC CONVENIENCE AND SAFETY.

ANY SPECIAL SIGNS DEEMED NECESSARY FOR THE GUIDANCE AND PROTECTION OF TRAFFIC OVER THE PROJECT OR DETOUR WILL BE FURNISHED AND INSTALLED BY THE DEPARTMENT.

ALL COSTS INCIDENTAL TO THE FOREGOING REQUIREMENTS WILL NOT BE PAID FOR AS A SEPARATE ITEM BUT SHALL BE INCLUDED IN THE ORIGINAL CONTRACT PRICES FOR THE PROJECT.



For use on Type I Barricades at ends of project and/or inside of project where needed. Reflector buttons shall be Signal Service ALA 31 (white crystal) or suitable equivalent. Minimum thickness of lumber to be 1".

COLORADO STATE HIGHWAY DEPARTMENT

STANDARD ROADWAY CONSTRUCTION TRAFFIC SIGNS

Designed by A.R.P. Approved by R.E.L.
 Made by B.O.C. Date: January 1st 1948
 Checked by